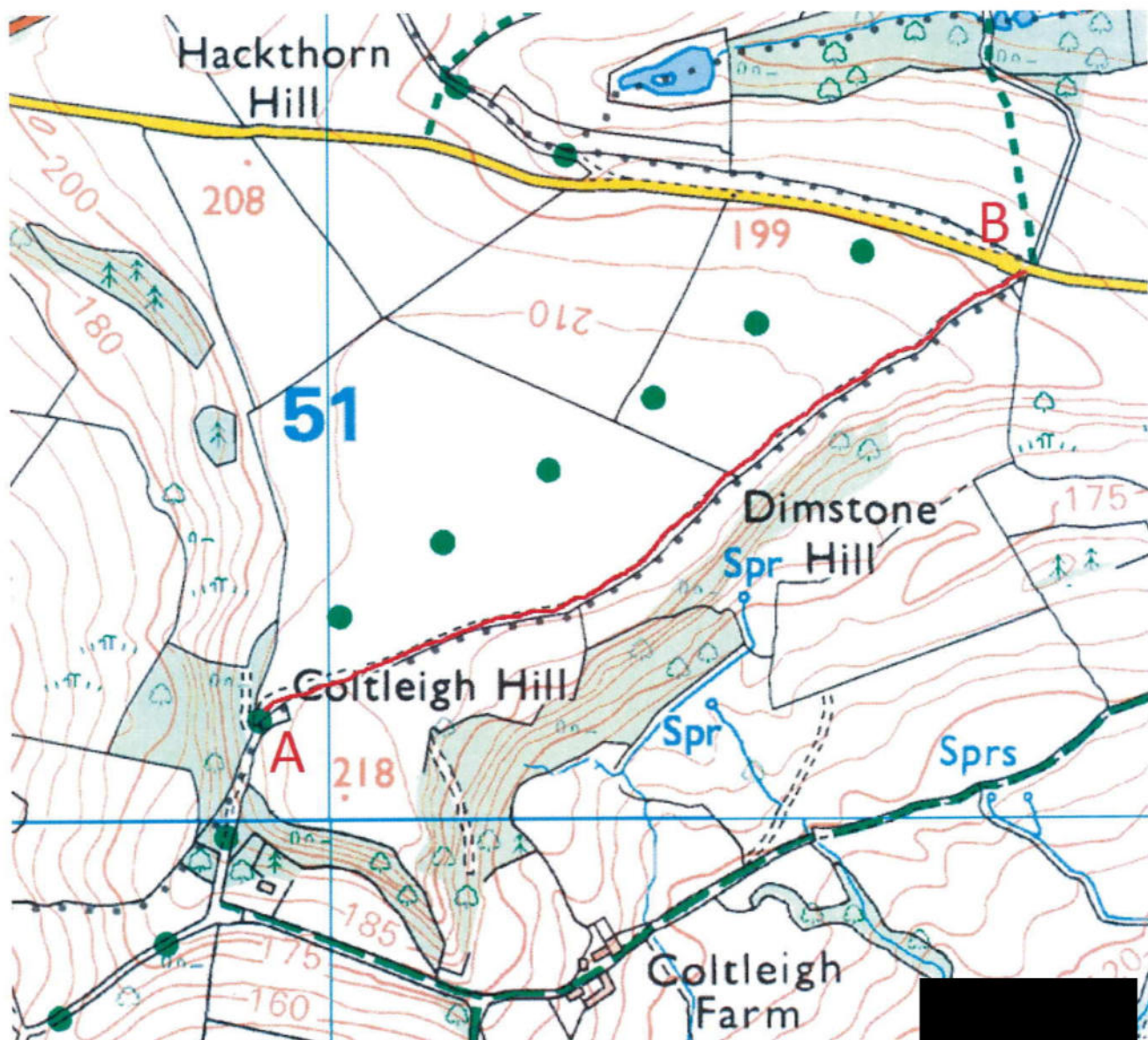


Wildlife and Countryside Act 1981

The Definitive Map and Statement of Public Rights of Way in Dorset

Map accompanying the DMMO application to add a bridleway along the route shown on the plan below:

For a route extending from Point A (at approximately ST 5091 0012) at the northern end of a public road by Coltleigh Hill, north-eastwards to Point B (at approximately ST 5178 0062) on the public road opposite the southern end of definitive footpath W 31/3 in the parish of Beaminster.



"This copy has been made by or with the authority of Dorset Council pursuant to section 47 of the Copyright, Designs and Patents Act 1988 ("the Act"). Unless the Act provides a relevant exception to copyright, the copy must not be copied without the prior permission of the copyright owner."